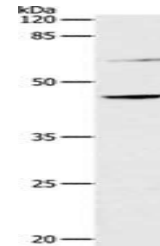


Product Datasheet

CCR7 antibody (orb522176)

| | |
|----------------------------|---|
| Description | CCR7 antibody |
| Species/Host | Rabbit |
| Reactivity | Human |
| Conjugation | Unconjugated |
| Tested Applications | ELISA, WB |
| Immunogen | Synthetic peptide of Human CCR7 |
| Target | CCR7 |
| Preservatives | -20°C, pH7.4 PBS, 0.05% NaN ₃ , 40% Glycerol |
| Form/Appearance | Liquid |
| Storage | Upon receipt, store at -20°C or -80°C. Avoid repeated freeze. |
| Note | For research use only |
| Isotype | IgG |
| Clonality | Polyclonal |
| Uniprot ID | P32248 |
| Dilution Range | ELISA:1:500-1:5000, WB:1:200-1:1000 |
| Expiration Date | 12 months from date of receipt. |



Western blot
analysis of
293T
cellsusin...