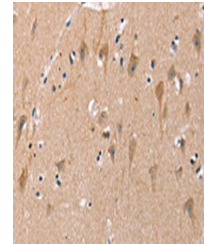


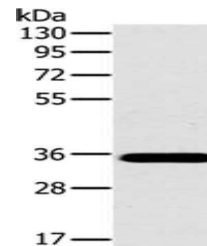
## Product Datasheet

### OTUB1 antibody (orb521323)

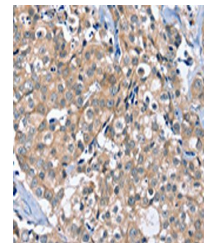
|                            |                                                                                                                                            |
|----------------------------|--------------------------------------------------------------------------------------------------------------------------------------------|
| <b>Description</b>         | OTUB1 antibody                                                                                                                             |
| <b>Species/Host</b>        | Rabbit                                                                                                                                     |
| <b>Reactivity</b>          | Human, Mouse, Rat                                                                                                                          |
| <b>Conjugation</b>         | Unconjugated                                                                                                                               |
| <b>Tested Applications</b> | ELISA, IHC, WB                                                                                                                             |
| <b>Immunogen</b>           | Fusion protein of Human OTUB1                                                                                                              |
| <b>Target</b>              | OTUB1                                                                                                                                      |
| <b>Preservatives</b>       | -20°C, pH7.4 PBS, 0.05% NaN <sub>3</sub> , 40% Glycerol                                                                                    |
| <b>Form/Appearance</b>     | Liquid                                                                                                                                     |
| <b>Storage</b>             | Maintain refrigerated at 2-8°C for up to 2 weeks.<br>For long term storage store at -20°C in small aliquots to prevent freeze-thaw cycles. |
| <b>Note</b>                | For research use only                                                                                                                      |
| <b>Isotype</b>             | IgG                                                                                                                                        |
| <b>Clonality</b>           | Polyclonal                                                                                                                                 |
| <b>Uniprot ID</b>          | <b>Q96FW1</b>                                                                                                                              |
| <b>Dilution Range</b>      | ELISA:1:2000-1:10000, WB:1:1000-1:5000, IHC-P:1:50-1:200                                                                                   |
| <b>Expiration Date</b>     | 12 months from date of receipt.                                                                                                            |



Immunohistochemistry of paraffin-embedde...



Western blot aanalysis of Mouse brain ti...



Immunohistochemistry of paraffin-embedde...