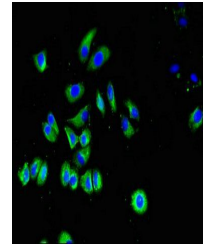


Product Datasheet

SLC40A1 antibody (orb52058)

Description	SLC40A1 antibody
Species/Host	Rabbit
Reactivity	Human
Conjugation	Unconjugated
Tested Applications	ELISA, IF
Immunogen	Recombinant Human Solute carrier family 40 member 1 protein (148-298AA)
Target	SLC40A1
Preservatives	Preservative: 0.03% Proclin 300. Constituents: 50% Glycerol
Form/Appearance	Liquid
Storage	Maintain refrigerated at 2-8°C for up to 2 weeks. For long term storage store at -20°C in small aliquots to prevent freeze-thaw cycles.
Note	For research use only
Isotype	IgG
Clonality	Polyclonal
Uniprot ID	Q9NP59
Dilution Range	IF:1:50-200
Expiration Date	12 months from date of receipt.



Immunofluorescence analysis of HepG2 cel...