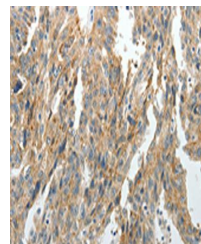


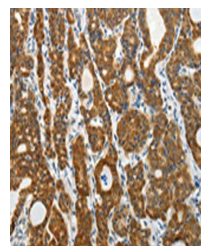
## Product Datasheet

### PRDX5 antibody (orb519406)

|                            |  |
|----------------------------|--|
| <b>Description</b>         | PRDX5 antibody   |
| <b>Species/Host</b>        | Rabbit   |
| <b>Reactivity</b>          | Human, Mouse, Rat  |
| <b>Conjugation</b>         | Unconjugated   |
| <b>Tested Applications</b> | ELISA, IHC   |
| <b>Immunogen</b>           | Fusion protein of Human PRDX5  |
| <b>Target</b>              | PRDX5  |
| <b>Preservatives</b>       | -20°C, pH7.4 PBS, 0.05% NaN <sub>3</sub> , 40% Glycerol  |
| <b>Form/Appearance</b>     | Liquid   |
| <b>Storage</b>             | Maintain refrigerated at 2-8°C for up to 2 weeks.<br>For long term storage store at -20°C in small aliquots to prevent freeze-thaw cycles. |
| <b>Note</b>                | For research use only  |
| <b>Isotype</b>             | IgG  |
| <b>Clonality</b>           | Polyclonal   |
| <b>Uniprot ID</b>          | <b>P30044</b>  |
| <b>Dilution Range</b>      | ELISA:1:2000-1:5000, IHC-P:1:50-1:200  |
| <b>Expiration Date</b>     | 12 months from date of receipt.  |



Immunohistochemistry of paraffin-embedde...



Immunohistochemistry of paraffin-embedde...