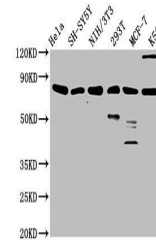


Product Datasheet

KMT2E antibody (orb518236)

Description	KMT2E antibody
Species/Host	Rabbit
Reactivity	Human, Mouse
Conjugation	Unconjugated
Tested Applications	ELISA, WB
Immunogen	Recombinant Human Histone-lysine N-methyltransferase 2E protein (182-316AA)
Target	KMT2E
Preservatives	Preservative: 0.03% Proclin 300. Constituents: 50% Glycerol
Form/Appearance	Liquid
Storage	Maintain refrigerated at 2-8°C for up to 2 weeks. For long term storage store at -20°C in small aliquots to prevent freeze-thaw cycles.
Note	For research use only
Isotype	IgG
Clonality	Polyclonal
Uniprot ID	Q8IZD2
Expiration Date	12 months from date of receipt.



Western blot analysis of HeLa whole cell...