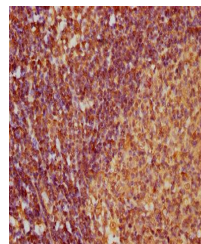


Product Datasheet

CCL27 antibody (orb518052)

Description	CCL27 antibody
Species/Host	Rabbit
Reactivity	Human
Conjugation	Unconjugated
Tested Applications	ELISA, IHC
Immunogen	Recombinant Human C-C motif chemokine 27 protein (25-112AA)
Target	CCL27
Preservatives	Preservative: 0.03% Proclin 300. Constituents: 50% Glycerol
Form/Appearance	Liquid
Storage	Maintain refrigerated at 2-8°C for up to 2 weeks. For long term storage store at -20°C in small aliquots to prevent freeze-thaw cycles.
Note	For research use only
Isotype	IgG
Clonality	Polyclonal
Uniprot ID	Q9Y4X3
Dilution Range	IHC-P:1:20-1:200
Expiration Date	12 months from date of receipt.



Immunohistochemistry of paraffin-embedde...