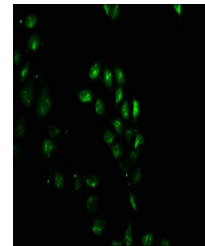


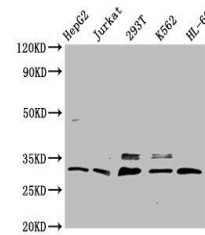
Product Datasheet

GEMIN2 antibody (orb517952)

Description	GEMIN2 antibody
Species/Host	Rabbit
Reactivity	Human
Conjugation	Unconjugated
Tested Applications	ELISA, IF, IP, WB
Immunogen	Recombinant Human Gem-associated protein 2 protein (1-280AA)
Target	GEMIN2
Preservatives	Preservative: 0.03% Proclin 300. Constituents: 50% Glycerol
Form/Appearance	Liquid
Storage	Maintain refrigerated at 2-8°C for up to 2 weeks. For long term storage store at -20°C in small aliquots to prevent freeze-thaw cycles.
Note	For research use only
Isotype	IgG
Clonality	Polyclonal
Uniprot ID	O14893
Dilution Range	WB:1:500-1:5000, IF:1:50-1:200
Expiration Date	12 months from date of receipt.



Immunofluorescence staining of HeLa cell...



Western blot analysis of HepG2 whole ce...