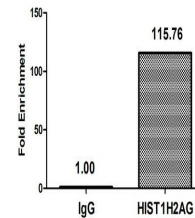


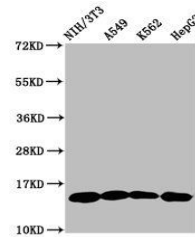
## Product Datasheet

### HIST1H2AG (Ab-118) antibody (orb517091)

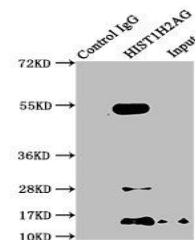
|                            |   |
|----------------------------|---|
| <b>Description</b>         | HIST1H2AG (Ab-118) antibody   |
| <b>Species/Host</b>        | Rabbit  |
| <b>Reactivity</b>          | Human, Mouse  |
| <b>Conjugation</b>         | Unconjugated  |
| <b>Tested Applications</b> | ChIP, ELISA, IP, WB   |
| <b>Immunogen</b>           | Peptide sequence around site of Lys (118) derived from Human Histone H2A type 1   |
| <b>Target</b>              | HIST1H2AG   |
| <b>Preservatives</b>       | Preservative: 0.03% Proclin 300. Constituents: 50% Glycerol   |
| <b>Form/Appearance</b>     | Liquid  |
| <b>Storage</b>             | Maintain refrigerated at 2-8°C for up to 2 weeks. For long term storage store at -20°C in small aliquots to prevent freeze-thaw cycles. |
| <b>Note</b>                | For research use only   |
| <b>Isotype</b>             | IgG   |
| <b>Clonality</b>           | Polyclonal  |
| <b>Uniprot ID</b>          | <b>POC0S8</b>   |
| <b>Dilution Range</b>      | WB:1:500-1:5000, IP:1:200-1:2000  |
| <b>Expiration Date</b>     | 12 months from date of receipt.   |



Chromatin Immunoprecipitation  
Hela (4\*10...



Western blot analysis of NIH/3T3 whole ...



Immunoprecipitation analysis of NIH/3T3

...