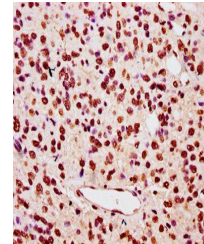


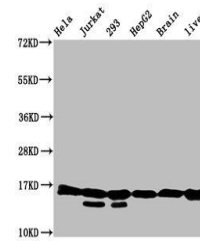
Product Datasheet

HIST1H3A (Ab-122) antibody (orb517074)

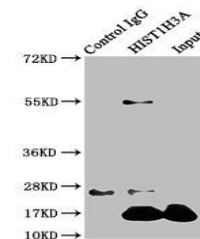
Description	HIST1H3A (Ab-122) antibody
Species/Host	Rabbit
Reactivity	Human, Rat
Conjugation	Unconjugated
Tested Applications	ELISA, IF, IHC, IP, WB
Immunogen	Peptide sequence around site of Lys (122) derived from Human Histone H3.1
Target	HIST1H3A
Preservatives	Preservative: 0.03% Proclin 300. Constituents: 50% Glycerol
Form/Appearance	Liquid
Storage	Maintain refrigerated at 2-8°C for up to 2 weeks. For long term storage store at -20°C in small aliquots to prevent freeze-thaw cycles.
Note	For research use only
Isotype	IgG
Clonality	Polyclonal
Uniprot ID	P68431
Dilution Range	WB:1:500-1:5000, IHC-P:1:1-1:10, IF:1:50-1:200, IP:1:200-1:2000
Expiration Date	12 months from date of receipt.



Immunohistochemistry of paraffin-embedde...



Western blot analysis of HeLa whole cel...



Immunoprecipitation analysis of HeLa who...