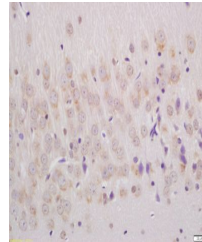


Product Datasheet

Ephrin B (phospho-Tyr324/329) antibody (orb5163)

Description	Ephrin B (phospho-Tyr324/329) antibody
Species/Host	Rabbit
Reactivity	Human
Conjugation	Unconjugated
Tested Applications	ELISA, IF, IHC-Fr, WB
Immunogen	KLH conjugated Synthesised phosphopeptide derived from human Ephrin B around the phosphorylation site of Tyr324/329 (GD(p-Y)GHPV(p-Y)IV)
Target	phospho-Ephrin B (Tyr324 + Tyr329)
Preservatives	0.01M TBS(pH7.4) with 1% rAlbumin, 0.03% Proclin300 and 50% Glycerol.
Form/Appearance	Liquid
Concentration	1mg/ml
Storage	Shipped at 4°C. Store at -20 °C for one year. Avoid repeated freeze/thaw cycles.
Note	For research use only
Isotype	IgG
Clonality	Polyclonal
MW	36 kDa
Uniprot ID	P52799
Expiration Date	12 months from date of receipt.



Immunohistochemical staining of rat brai...