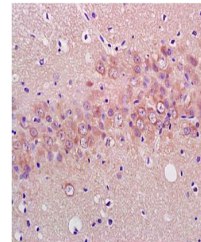


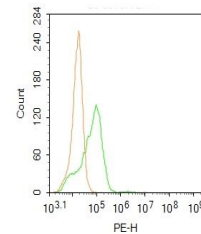
Product Datasheet

ENO3 antibody (orb5157)

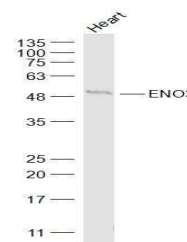
Description	ENO3 antibody
Species/Host	Rabbit
Reactivity	Human, Mouse, Rat
Conjugation	Unconjugated
Tested Applications	FC, IHC-P, WB
Immunogen	KLH conjugated synthetic peptide derived from human ENO3 (341-434/434 aa)
Target	ENO3
Preservatives	0.01M TBS(pH7.4) with 1% rAlbumin, 0.03% Proclin300 and 50% Glycerol.
Form/Appearance	Liquid
Concentration	1mg/ml
Storage	Shipped at 4°C. Store at -20 °C for one year. Avoid repeated freeze/thaw cycles.
Note	For research use only
Isotype	IgG
Clonality	Polyclonal
MW	47 kDa
Uniprot ID	P13929
Dilution Range	WB=1:500-2000, IHC-P=1:100-500, Flow-Cyt=2ug/Test', IHC-F=1:100-500, IF=1:100-500, ELISA=1:5000-10000
Expiration Date	12 months from date of receipt.



Immunohistochemical staining of rat brain...



Flow cytometric analysis of Hela cells...



Western blot analysis of Heart (Mouse) L...