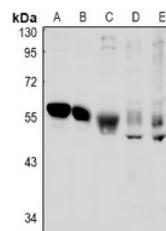


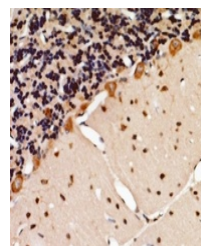
Product Datasheet

TSG101 antibody (orb515563)

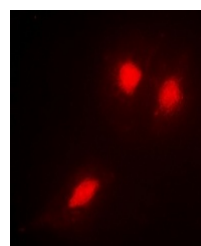
Description	Rabbit polyclonal antibody to TSG101
Species/Host	Rabbit
Reactivity	Human, Mouse, Rat
Conjugation	Unconjugated
Tested Applications	IF, IH, WB
Immunogen	KLH-conjugated synthetic peptide encompassing a sequence within the C-term region of human TSG101. The exact sequence is proprietary.
Target	TSG101
Preservatives	Liquid in 0.42% Potassium phosphate, 0.87% Sodium chloride, pH 7.3, 30% glycerol, and 0.01% sodium azide.
Form/Appearance	Liquid in 0.42% Potassium phosphate, 0.87% Sodium chloride, pH 7.3, 30% glycerol, and 0.01% sodium azide.
Storage	Maintain refrigerated at 2-8°C for up to 2 weeks. For long term storage store at -20°C in small aliquots to prevent freeze-thaw cycles.
Note	For research use only
Clonality	Polyclonal
Source	Rabbit
Uniprot ID	Q61187 , Q99816 , Q6IRE4
Entrez	22088 , 7251 , 292925
Dilution Range	WB: 1:500-1000, IHC-P: 1:50-100, IF/ICC: 1:100-500
Expiration Date	12 months from date of receipt.



Western blot analysis of TSG101 expressi...



Immunohistochemical analysis of TSG101 S...



Immunofluorescent analysis of TSG101 sta...