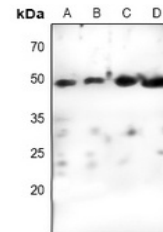


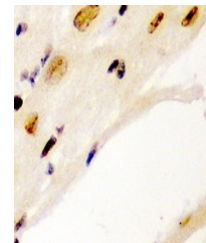
Product Datasheet

CCNE1 antibody (orb515540)

Description	Rabbit polyclonal antibody to CCNE1
Species/Host	Rabbit
Reactivity	Human, Mouse, Primate, Rat
Conjugation	Unconjugated
Tested Applications	IF, IH, WB
Immunogen	KLH-conjugated synthetic peptide encompassing a sequence within the center region of human Cyclin E1. The exact sequence is proprietary.
Target	CCNE1
Preservatives	Liquid in 0.42% Potassium phosphate, 0.87% Sodium chloride, pH 7.3, 30% glycerol, and 0.01% sodium azide.
Form/Appearance	Liquid in 0.42% Potassium phosphate, 0.87% Sodium chloride, pH 7.3, 30% glycerol, and 0.01% sodium azide.
Storage	Maintain refrigerated at 2-8°C for up to 2 weeks. For long term storage store at -20°C in small aliquots to prevent freeze-thaw cycles.
Note	For research use only
Clonality	Polyclonal
Source	Rabbit
Uniprot ID	Q61457 , P24864 , P39949
Entrez	12447 , 898
Dilution Range	WB: 1:500-1000, IHC-P: 1:50-100, IF/ICC: 1:100-500
Expiration Date	12 months from date of receipt.



Western blot analysis of Cyclin E1 expression...



Immunohistochemical analysis of Cyclin E1...



Immunofluorescent analysis of Cyclin E1

...