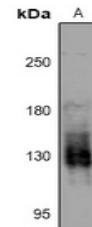


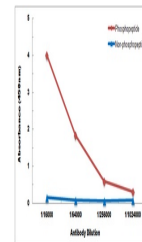
## Product Datasheet

### PKN1 (phospho-T774/816) antibody (orb515530)

<b>Description</b>	Rabbit polyclonal antibody to PKN1 (phospho-T774/816)
<b>Species/Host</b>	Rabbit
<b>Reactivity</b>	Human, Mouse, Rat
<b>Conjugation</b>	Unconjugated
<b>Tested Applications</b>	WB
<b>Immunogen</b>	KLH-conjugated synthetic phosphopeptide corresponding to residues surrounding T774/816 of human PKN1/2 protein. The exact sequence is proprietary.
<b>Target</b>	PKN1; PKN2
<b>Preservatives</b>	Liquid in 0.42% Potassium phosphate, 0.87% Sodium chloride, pH 7.3, 30% glycerol, and 0.01% sodium azide.
<b>Form/Appearance</b>	Liquid in 0.42% Potassium phosphate, 0.87% Sodium chloride, pH 7.3, 30% glycerol, and 0.01% sodium azide.
<b>Storage</b>	Shipped at 4°C. Upon delivery aliquot and store at -20°C for one year. Avoid freeze/thaw cycles.
<b>Note</b>	For research use only
<b>Clonality</b>	Polyclonal
<b>Source</b>	Rabbit
<b>Uniprot ID</b>	<a href="#">Q8BWW9</a> , <a href="#">Q16512</a> , <a href="#">Q63433</a> , <a href="#">P70268</a> , <a href="#">Q16513</a> , <a href="#">O08874</a>
<b>Entrez</b>	<a href="#">5586</a> , <a href="#">29355</a> , <a href="#">320795</a> , <a href="#">5585</a> , <a href="#">109333</a>
<b>Dilution Range</b>	WB: 1:500-1000
<b>Expiration Date</b>	12 months from date of receipt.



Western blot analysis of PKN1/2 (Phospho-T774/816)



Direct ELISA antibody dose-response curve...