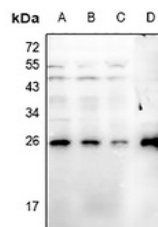


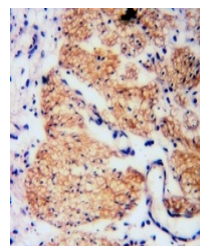
Product Datasheet

RGS19 (phospho-S151) antibody (orb515526)

Description	Rabbit polyclonal antibody to RGS19 (phospho-S151)
Species/Host	Rabbit
Reactivity	Human, Mouse, Rat
Conjugation	Unconjugated
Tested Applications	IH, WB
Immunogen	KLH-conjugated synthetic phosphopeptide corresponding to residues surrounding S151 of human RGS19 protein. The exact sequence is proprietary.
Target	RGS19
Preservatives	Liquid in 0.42% Potassium phosphate, 0.87% Sodium chloride, pH 7.3, 30% glycerol, and 0.01% sodium azide.
Form/Appearance	Liquid in 0.42% Potassium phosphate, 0.87% Sodium chloride, pH 7.3, 30% glycerol, and 0.01% sodium azide.
Storage	Shipped at 4°C. Upon delivery aliquot and store at -20°C for one year. Avoid freeze/thaw cycles.
Note	For research use only
Clonality	Polyclonal
Source	Rabbit
Uniprot ID	O70521 , P49795 , Q9CX84
Entrez	56470 , 59293 , 10287
Dilution Range	WB: 1:500-1000
Expiration Date	12 months from date of receipt.



Western blot analysis of RGS19 (Phospho-S151)



Immunohistochemical analysis of RGS19 (Phospho-S151)