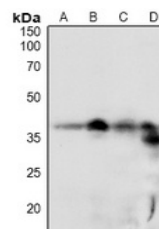


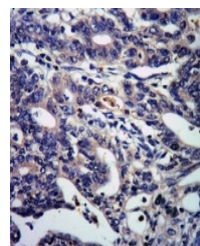
Product Datasheet

RCAN1 (phospho-S108) antibody (orb515525)

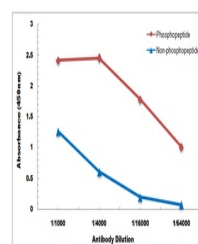
Description	Rabbit polyclonal antibody to RCAN1 (phospho-S108)
Species/Host	Rabbit
Reactivity	Human, Mouse, Rat, Sheep
Conjugation	Unconjugated
Tested Applications	IH, WB
Immunogen	KLH-conjugated synthetic phosphopeptide corresponding to residues surrounding S108 of human DSCR1 protein. The exact sequence is proprietary.
Target	RCAN1
Preservatives	Liquid in 0.42% Potassium phosphate, 0.87% Sodium chloride, pH 7.3, 30% glycerol, and 0.01% sodium azide.
Form/Appearance	Liquid in 0.42% Potassium phosphate, 0.87% Sodium chloride, pH 7.3, 30% glycerol, and 0.01% sodium azide.
Storage	Maintain refrigerated at 2-8°C for up to 2 weeks. For long term storage store at -20°C in small aliquots to prevent freeze-thaw cycles.
Note	For research use only
Clonality	Polyclonal
Source	Rabbit
Uniprot ID	Q9JHG6 , P53805 , Q6IN33
Entrez	1827 , 54720 , 266766
Dilution Range	WB: 1:500-1000
Expiration Date	12 months from date of receipt.



Western blot analysis of DSCR1 (Phospho-S108)



Immunohistochemical analysis of DSCR1 (Phospho-S108)



Direct ELISA antibody dose-response curve