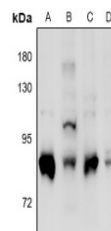


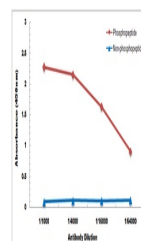
Product Datasheet

PRKCD (phospho-S664) antibody (orb515517)

Description	Rabbit polyclonal antibody to PRKCD (phospho-S664)
Species/Host	Rabbit
Reactivity	Human, Mouse, Rat
Conjugation	Unconjugated
Tested Applications	WB
Immunogen	KLH-conjugated synthetic phosphopeptide corresponding to residues surrounding S664 of human PKC delta protein. The exact sequence is proprietary.
Target	PRKCD
Preservatives	Liquid in 0.42% Potassium phosphate, 0.87% Sodium chloride, pH 7.3, 30% glycerol, and 0.01% sodium azide.
Form/Appearance	Liquid in 0.42% Potassium phosphate, 0.87% Sodium chloride, pH 7.3, 30% glycerol, and 0.01% sodium azide.
Storage	Maintain refrigerated at 2-8°C for up to 2 weeks. For long term storage store at -20°C in small aliquots to prevent freeze-thaw cycles.
Note	For research use only
Clonality	Polyclonal
Source	Rabbit
Uniprot ID	Q05655, P28867, P09215
Entrez	170538, 5580, 18753
Dilution Range	WB: 1:500-1000
Expiration Date	12 months from date of receipt.



Western blot analysis of PKC delta (Phospho-S664) in lanes A, B, C, and D.



Direct ELISA antibody dose-response curve showing OD (450nm) vs Antibody Dilution.