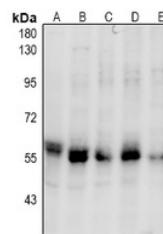


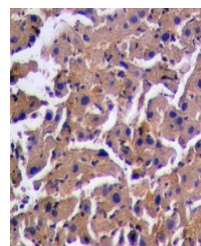
Product Datasheet

PINK1 (phospho-S228) antibody (orb515511)

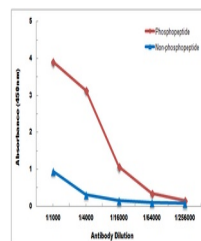
Description	Rabbit polyclonal antibody to PINK1 (phospho-S228)
Species/Host	Rabbit
Reactivity	Human, Mouse, Rat
Conjugation	Unconjugated
Tested Applications	IH, WB
Immunogen	KLH-conjugated synthetic phosphopeptide corresponding to residues surrounding S228 of human PINK1 protein. The exact sequence is proprietary.
Target	PINK1
Preservatives	Liquid in 0.42% Potassium phosphate, 0.87% Sodium chloride, pH 7.3, 30% glycerol, and 0.01% sodium azide.
Form/Appearance	Liquid in 0.42% Potassium phosphate, 0.87% Sodium chloride, pH 7.3, 30% glycerol, and 0.01% sodium azide.
Storage	Shipped at 4°C. Upon delivery aliquot and store at -20°C for one year. Avoid freeze/thaw cycles.
Note	For research use only
Clonality	Polyclonal
Source	Rabbit
Uniprot ID	Q99MQ3 , Q9BXM7
Entrez	68943 , 65018
Dilution Range	WB: 1:500-1000
Expiration Date	12 months from date of receipt.



Western blot analysis of PINK1 (Phospho-...



Immunohistochemical analysis of PINK1 (P...



Direct ELISA antibody dose-response curve...