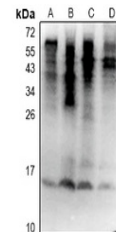


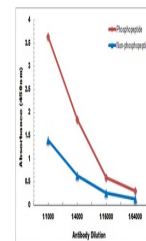
Product Datasheet

UBA52 (phospho-S65) antibody (orb515510)

Description	Rabbit polyclonal antibody to UBA52 (phospho-S65)
Species/Host	Rabbit
Reactivity	Human, Mouse, Rat
Conjugation	Unconjugated
Tested Applications	WB
Immunogen	KLH-conjugated synthetic phosphopeptide corresponding to residues surrounding S65 of human Ubiquitin protein. The exact sequence is proprietary.
Target	UBA52; RPS27A; UBB; UBC
Preservatives	Liquid in 0.42% Potassium phosphate, 0.87% Sodium chloride, pH 7.3, 30% glycerol, and 0.01% sodium azide.
Form/Appearance	Liquid in 0.42% Potassium phosphate, 0.87% Sodium chloride, pH 7.3, 30% glycerol, and 0.01% sodium azide.
Storage	Maintain refrigerated at 2-8°C for up to 2 weeks. For long term storage store at -20°C in small aliquots to prevent freeze-thaw cycles.
Note	For research use only
Clonality	Polyclonal
Source	Rabbit
Uniprot ID	P62987 , P62979 , P0CG47 , P0CG48
Entrez	7314 , 6233 , 7311 , 7316
Dilution Range	WB: 1:500-1000
Expiration Date	12 months from date of receipt.



Western blot analysis of Ubiquitin (Phos...



Direct ELISA antibody dose-response curv...