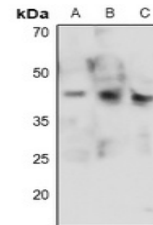


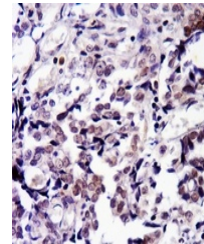
Product Datasheet

CDK9 (phospho-T186) antibody (orb515502)

Description	Rabbit polyclonal antibody to CDK9 (phospho-T186)
Species/Host	Rabbit
Reactivity	Human, Mouse, Porcine, Rat
Conjugation	Unconjugated
Tested Applications	IH, WB
Immunogen	KLH-conjugated synthetic phosphopeptide corresponding to residues surrounding T186 of human CDK9 protein. The exact sequence is proprietary.
Target	CDK9
Preservatives	Liquid in 0.42% Potassium phosphate, 0.87% Sodium chloride, pH 7.3, 30% glycerol, and 0.01% sodium azide.
Form/Appearance	Liquid in 0.42% Potassium phosphate, 0.87% Sodium chloride, pH 7.3, 30% glycerol, and 0.01% sodium azide.
Storage	Maintain refrigerated at 2-8°C for up to 2 weeks. For long term storage store at -20°C in small aliquots to prevent freeze-thaw cycles.
Note	For research use only
Clonality	Polyclonal
Source	Rabbit
Uniprot ID	P50750 , Q99J95 , Q641Z4
Entrez	107951 , 1025 , 362110
Dilution Range	WB: 1:500-1000
Expiration Date	12 months from date of receipt.



Western blot analysis of CDK9 (Phospho-T186)



Immunohistochemical analysis of CDK9 (Phospho-T186)