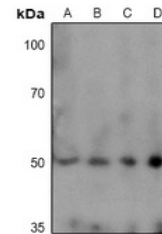


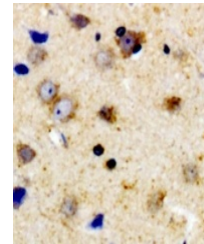
Product Datasheet

TPH1 (phospho-S58) antibody (orb515501)

Description	Rabbit polyclonal antibody to TPH1 (phospho-S58)
Species/Host	Rabbit
Reactivity	Human, Mouse, Rabbit, Rat
Conjugation	Unconjugated
Tested Applications	IH, WB
Immunogen	KLH-conjugated synthetic phosphopeptide corresponding to residues surrounding S58 of human TPH1 protein. The exact sequence is proprietary.
Target	TPH1
Preservatives	Liquid in 0.42% Potassium phosphate, 0.87% Sodium chloride, pH 7.3, 30% glycerol, and 0.01% sodium azide.
Form/Appearance	Liquid in 0.42% Potassium phosphate, 0.87% Sodium chloride, pH 7.3, 30% glycerol, and 0.01% sodium azide.
Storage	Maintain refrigerated at 2-8°C for up to 2 weeks. For long term storage store at -20°C in small aliquots to prevent freeze-thaw cycles.
Note	For research use only
Clonality	Polyclonal
Source	Rabbit
Uniprot ID	P17532, P09810, P17752
Entrez	21990, 7166, 24848
Dilution Range	WB: 1:500-1000, IHC-P: 1:50-100
Expiration Date	12 months from date of receipt.



Western blot analysis of TPH1 (Phospho-S...



Immunohistochemical analysis of TPH1 (Ph...