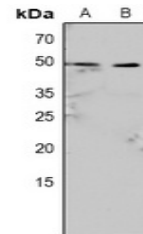


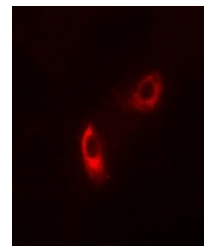
Product Datasheet

CASP9 (phospho-Y153) antibody (orb515497)

Description	Rabbit polyclonal antibody to CASP9 (phospho-Y153)
Species/Host	Rabbit
Reactivity	Human
Conjugation	Unconjugated
Tested Applications	IF, WB
Immunogen	KLH-conjugated synthetic phosphopeptide corresponding to residues surrounding Y153 of human Caspase 9 protein. The exact sequence is proprietary.
Target	CASP9
Preservatives	Liquid in 0.42% Potassium phosphate, 0.87% Sodium chloride, pH 7.3, 30% glycerol, and 0.01% sodium azide.
Form/Appearance	Liquid in 0.42% Potassium phosphate, 0.87% Sodium chloride, pH 7.3, 30% glycerol, and 0.01% sodium azide.
Storage	Maintain refrigerated at 2-8°C for up to 2 weeks. For long term storage store at -20°C in small aliquots to prevent freeze-thaw cycles.
Note	For research use only
Clonality	Polyclonal
Source	Rabbit
Uniprot ID	P55211
Entrez	842
Dilution Range	WB: 1:500-1000, IF/ICC: 1:100-500
Expiration Date	12 months from date of receipt.



Western blot analysis of Caspase 9 (Phos...



Immunofluorescent analysis of Caspase 9 ...