
Product Datasheet

RPS6KA1 (phospho-T359/S363) antibody (orb515490)

Description

Rabbit polyclonal antibody to RPS6KA1

Species/Host

Rabbit

Reactivity

Human, Mouse, Rat

Conjugation

Unconjugated

Tested Applications

IH, WB

Immunogen

KLH-conjugated synthetic phosphopeptide corresponding to residues surrounding T359/S363 of human RSK1 protein. The exact sequence is proprietary.

Target

RPS6KA1

Preservatives

Liquid in 0.42% Potassium phosphate, 0.87% Sodium chloride, pH 7.3, 30% glycerol, and 0.01% sodium azide.

Form/Appearance

Liquid in 0.42% Potassium phosphate, 0.87% Sodium chloride, pH 7.3, 30% glycerol, and 0.01% sodium azide.

Storage

Maintain refrigerated at 2-8°C for up to 2 weeks. For long term storage store at -20°C in small aliquots to prevent freeze-thaw cycles.

Note

For research use only

Clonality

Polyclonal

Source

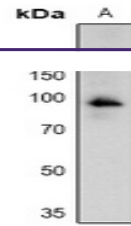
Rabbit

Uniprot ID
[P18653](#), [Q15418](#), [Q63531](#)
Entrez
[20111](#), [81771](#), [6195](#)
Dilution Range

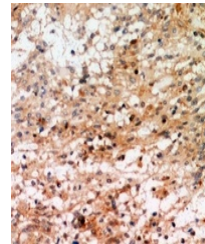
WB: 1:500-1000, IHC-P: 1:50-100

Expiration Date

12 months from date of receipt.



Western blot analysis of RSK1 (Phospho-T...)



Immunohistochemical analysis of RSK1 (Ph...)