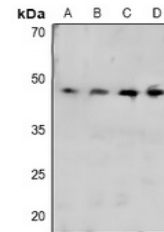


Product Datasheet

CRK (phospho-Y221) antibody (orb515487)

Description	Rabbit polyclonal antibody to CRK (phospho-Y221)
Species/Host	Rabbit
Reactivity	Human, Mouse, Rat
Conjugation	Unconjugated
Tested Applications	IF, WB
Immunogen	KLH-conjugated synthetic phosphopeptide corresponding to residues surrounding Y221 of human CRK protein. The exact sequence is proprietary.
Target	CRK
Preservatives	Liquid in 0.42% Potassium phosphate, 0.87% Sodium chloride, pH 7.3, 30% glycerol, and 0.01% sodium azide.
Form/Appearance	Liquid in 0.42% Potassium phosphate, 0.87% Sodium chloride, pH 7.3, 30% glycerol, and 0.01% sodium azide.
Storage	Maintain refrigerated at 2-8°C for up to 2 weeks. For long term storage store at -20°C in small aliquots to prevent freeze-thaw cycles.
Note	For research use only
Clonality	Polyclonal
Source	Rabbit
Uniprot ID	Q64010, Q63768, P46108
Entrez	54245, 12928, 1398
Dilution Range	WB: 1:500-1000, IF/ICC: 1:100-500
Expiration Date	12 months from date of receipt.



Western blot analysis of CRK (Phospho-Y221)



Immunofluorescent analysis of CRK (Phospho-Y221)