
Product Datasheet

SYT1 (phospho-T202/199) antibody (orb515485)

Description

Rabbit polyclonal antibody to SYT1 (phospho-

Species/Host

Rabbit

Reactivity

Human, Mouse, Rat

Conjugation

Unconjugated

Tested Applications

IH, WB

Immunogen

KLH-conjugated synthetic phosphopeptide corresponding to residues surrounding T202/199 of human Synaptotagmin protein. The exact sequence is proprietary.

Target

SYT1; SYT2

Preservatives

Liquid in 0.42% Potassium phosphate, 0.87% Sodium chloride, pH 7.3, 30% glycerol, and 0.01% sodium azide.

Form/Appearance

Liquid in 0.42% Potassium phosphate, 0.87% Sodium chloride, pH 7.3, 30% glycerol, and 0.01% sodium azide.

Storage

Maintain refrigerated at 2-8°C for up to 2 weeks. For long term storage store at -20°C in small aliquots to prevent freeze-thaw cycles.

Note

For research use only

Clonality

Polyclonal

Source

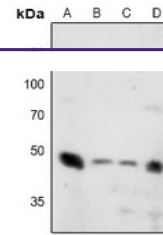
Rabbit

Uniprot ID
[P21579](#), [P29101](#), [P21707](#), [P46096](#), [P46097](#), [Q8N910](#)
Entrez
[20979](#), [20980](#), [127833](#), [24805](#), [25716](#), [6857](#)
Dilution Range

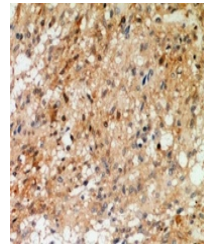
WB: 1:500-1000, IHC-P: 1:50-100

Expiration Date

12 months from date of receipt.



Western blot analysis of Synaptotagmin (...



Immunohistochemical analysis of Synaptot...