

---

## Product Datasheet

### CAMK2A (phospho-T305) antibody (orb515483)

**Description**

Rabbit polyclonal antibody to CAMK2A

**Species/Host**

Rabbit

**Reactivity**

Human, Mouse, Porcine, Rabbit, Rat, Zebrafish

**Conjugation**

Unconjugated

**Tested Applications**

IH, WB

**Immunogen**

KLH-conjugated synthetic phosphopeptide corresponding to residues surrounding T305 of human CaMK2 alpha/beta/delta protein. The exact sequence is proprietary.

**Target**

CAMK2A

**Preservatives**

Liquid in 0.42% Potassium phosphate, 0.87% Sodium chloride, pH 7.3, 30% glycerol, and 0.01% sodium azide.

**Form/Appearance**

Liquid in 0.42% Potassium phosphate, 0.87% Sodium chloride, pH 7.3, 30% glycerol, and 0.01% sodium azide.

**Storage**

Maintain refrigerated at 2-8°C for up to 2 weeks. For long term storage store at -20°C in small aliquots to prevent freeze-thaw cycles.

**Note**

For research use only

**Clonality**

Polyclonal

**Source**

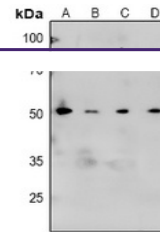
Rabbit

**Uniprot ID**
[Q13557](#), [P15791](#), [P08413](#), [P11798](#), [Q9UQM7](#), [P28652](#), [P11275](#), [Q6PHZ2](#), [Q13554](#)
**Entrez**
[108058](#), [12322](#), [25400](#), [816](#), [24246](#), [12323](#), [24245](#), [817](#)
**Dilution Range**

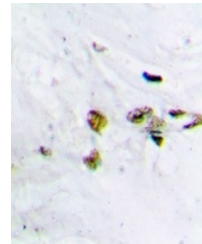
WB: 1:500-1000, IHC-P: 1:50-100

**Expiration Date**

12 months from date of receipt.



Western blot analysis of CaMK2 alpha/bet...



Immunohistochemical analysis of CaMK2 al...