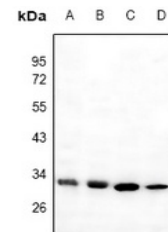


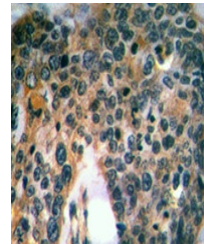
Product Datasheet

TPSAB1 antibody (orb515480)

Description	Rabbit polyclonal antibody to TPSAB1
Species/Host	Rabbit
Reactivity	Human, Mouse, Rat
Conjugation	Unconjugated
Tested Applications	IH, WB
Immunogen	KLH-conjugated synthetic peptide encompassing a sequence within the C-term region of human Mast Cell Tryptase. The exact sequence is proprietary.
Target	TPSAB1; TPSB2
Preservatives	Liquid in 0.42% Potassium phosphate, 0.87% Sodium chloride, pH 7.3, 30% glycerol, and 0.01% sodium azide.
Form/Appearance	Liquid in 0.42% Potassium phosphate, 0.87% Sodium chloride, pH 7.3, 30% glycerol, and 0.01% sodium azide.
Storage	Maintain refrigerated at 2-8°C for up to 2 weeks. For long term storage store at -20°C in small aliquots to prevent freeze-thaw cycles.
Note	For research use only
Clonality	Polyclonal
Source	Rabbit
Uniprot ID	P21845 , P20231 , P50343 , Q15661 , Q02844 , P27435
Entrez	29268 , 54271 , 100503895 , 7177
Dilution Range	WB: 1:500-1000
Expiration Date	12 months from date of receipt.



Western blot analysis of Mast Cell Tryptase.



Immunohistochemical analysis of Mast Cells.