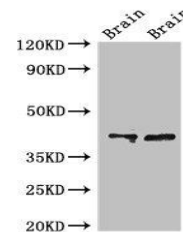


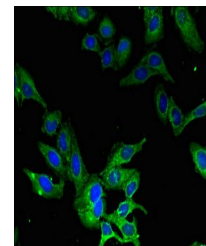
Product Datasheet

CAMK1 antibody (orb51546)

Description	CAMK1 antibody
Species/Host	Rabbit
Reactivity	Human, Mouse, Rat
Conjugation	Unconjugated
Tested Applications	ELISA, IF, WB
Immunogen	Recombinant Human Calcium/calmodulin-dependent protein kinase type 1 protein (166-265AA)
Target	CAMK1
Preservatives	Preservative: 0.03% Proclin 300. Constituents: 50% Glycerol
Form/Appearance	Liquid
Storage	Upon receipt, store at -20°C or -80°C. Avoid repeated freeze.
Note	For research use only
Isotype	IgG
Clonality	Polyclonal
Uniprot ID	Q14012
Dilution Range	WB:1:500-5000, IF:1:50-200
Expiration Date	12 months from date of receipt.



Western blot analysis of Rat and Mouse b...



Immunofluorescence analysis of HeLa cell...