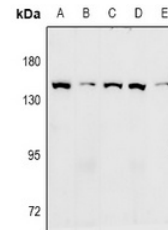


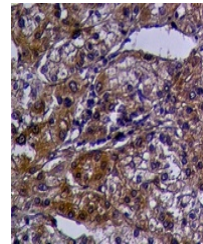
Product Datasheet

GPR124 antibody (orb515449)

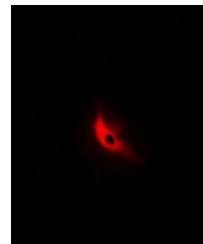
Description	Rabbit polyclonal antibody to GPR124
Species/Host	Rabbit
Reactivity	Human, Mouse, Rat
Conjugation	Unconjugated
Tested Applications	IF, IH, WB
Immunogen	KLH-conjugated synthetic peptide encompassing a sequence within the C-term region of human GPR124. The exact sequence is proprietary.
Target	GPR124
Preservatives	Liquid in 0.42% Potassium phosphate, 0.87% Sodium chloride, pH 7.3, 30% glycerol, and 0.01% sodium azide.
Form/Appearance	Liquid in 0.42% Potassium phosphate, 0.87% Sodium chloride, pH 7.3, 30% glycerol, and 0.01% sodium azide.
Storage	Maintain refrigerated at 2-8°C for up to 2 weeks. For long term storage store at -20°C in small aliquots to prevent freeze-thaw cycles.
Note	For research use only
Clonality	Polyclonal
Source	Rabbit
Uniprot ID	Q91ZV8 , Q96PE1
Entrez	25960 , 78560
Dilution Range	WB: 1:500-1000, IF/ICC: 1:100-500
Expiration Date	12 months from date of receipt.



Western blot analysis of GPR124 expressi...



Immunohistochemical analysis of GPR124 S...



Immunofluorescent analysis of GPR124 sta...