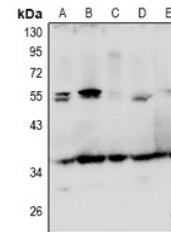


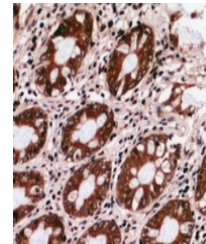
Product Datasheet

GRTP1 antibody (orb515325)

Description	Rabbit polyclonal antibody to GRTP1
Species/Host	Rabbit
Reactivity	Human, Mouse, Rat
Conjugation	Unconjugated
Tested Applications	IH, WB
Immunogen	KLH-conjugated synthetic peptide encompassing a sequence within the center region of human GRTP1. The exact sequence is proprietary.
Target	GRTP1
Preservatives	Liquid in 0.42% Potassium phosphate, 0.87% Sodium chloride, pH 7.3, 30% glycerol, and 0.01% sodium azide.
Form/Appearance	Liquid in 0.42% Potassium phosphate, 0.87% Sodium chloride, pH 7.3, 30% glycerol, and 0.01% sodium azide.
Storage	Maintain refrigerated at 2-8°C for up to 2 weeks. For long term storage store at -20°C in small aliquots to prevent freeze-thaw cycles.
Note	For research use only
Clonality	Polyclonal
Source	Rabbit
Uniprot ID	Q9D3N8 , Q4QQU7 , Q5TC63
Entrez	66790 , 79774 , 361180
Dilution Range	WB: 1:500-1000, IHC-P: 1:50-100
Expiration Date	12 months from date of receipt.



Western blot analysis of GRTP1 expressio...



Immunohistochemical analysis of GRTP1 st...