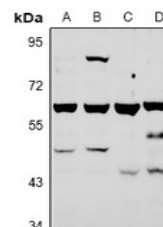


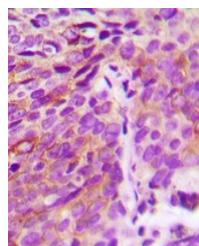
Product Datasheet

ATG4A antibody (orb515310)

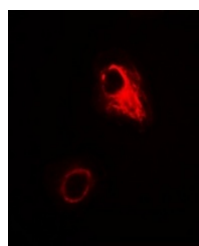
Description	Rabbit polyclonal antibody to ATG4A
Species/Host	Rabbit
Reactivity	Human, Mouse, Rat
Conjugation	Unconjugated
Tested Applications	IF, IH, WB
Immunogen	KLH-conjugated synthetic peptide encompassing a sequence within the center region of human ATG4A. The exact sequence is proprietary.
Target	ATG4A
Preservatives	Liquid in 0.42% Potassium phosphate, 0.87% Sodium chloride, pH 7.3, 30% glycerol, and 0.01% sodium azide.
Form/Appearance	Liquid in 0.42% Potassium phosphate, 0.87% Sodium chloride, pH 7.3, 30% glycerol, and 0.01% sodium azide.
Storage	Maintain refrigerated at 2-8°C for up to 2 weeks. For long term storage store at -20°C in small aliquots to prevent freeze-thaw cycles.
Note	For research use only
Clonality	Polyclonal
Source	Rabbit
Uniprot ID	Q8C9S8 , Q8WYN0
Entrez	115201 , 666468
Dilution Range	WB: 1:500-1000, IHC-P: 1:50-100, IF/ICC: 1:100-500
Expiration Date	12 months from date of receipt.



Western blot analysis of ATG4A expressio...



Immunohistochemical analysis of ATG4A st...



Immunofluorescent analysis of ATG4A stai...