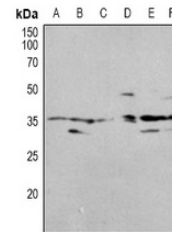


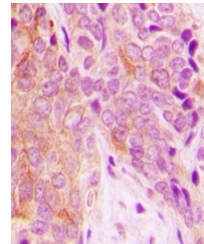
Product Datasheet

OTUB1 antibody (orb515291)

Description	Rabbit polyclonal antibody to OTUB1
Species/Host	Rabbit
Reactivity	Human, Mouse, Rat
Conjugation	Unconjugated
Tested Applications	IH, WB
Immunogen	KLH-conjugated synthetic peptide encompassing a sequence within the center region of human OTUB1. The exact sequence is proprietary.
Target	OTUB1
Preservatives	Liquid in 0.42% Potassium phosphate, 0.87% Sodium chloride, pH 7.3, 30% glycerol, and 0.01% sodium azide.
Form/Appearance	Liquid in 0.42% Potassium phosphate, 0.87% Sodium chloride, pH 7.3, 30% glycerol, and 0.01% sodium azide.
Storage	Maintain refrigerated at 2-8°C for up to 2 weeks. For long term storage store at -20°C in small aliquots to prevent freeze-thaw cycles.
Note	For research use only
Clonality	Polyclonal
Source	Rabbit
Uniprot ID	Q96FW1 , Q7TQI3 , B2RYG6
Entrez	55611 , 293705 , 107260
Dilution Range	WB: 1:500-1000, IHC-P: 1:50-100
Expiration Date	12 months from date of receipt.



Western blot analysis of OTUB1 expressio...



Immunohistochemical analysis of OTUB1 st...