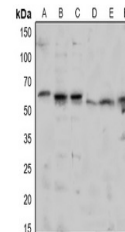


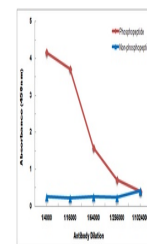
Product Datasheet

TAB1 (phospho-S438) antibody (orb515286)

Description	Rabbit polyclonal antibody to TAB1 (phospho-S438)
Species/Host	Rabbit
Reactivity	Human, Mouse, Rat
Conjugation	Unconjugated
Tested Applications	WB
Immunogen	KLH-conjugated synthetic phosphopeptide corresponding to residues surrounding S438 of human TAB1 protein. The exact sequence is proprietary.
Target	TAB1
Preservatives	Liquid in 0.42% Potassium phosphate, 0.87% Sodium chloride, pH 7.3, 30% glycerol, and 0.01% sodium azide.
Form/Appearance	Liquid in 0.42% Potassium phosphate, 0.87% Sodium chloride, pH 7.3, 30% glycerol, and 0.01% sodium azide.
Storage	Shipped at 4°C. Upon delivery aliquot and store at -20°C for one year. Avoid freeze/thaw cycles.
Note	For research use only
Clonality	Polyclonal
Source	Rabbit
Uniprot ID	Q8CF89 , Q15750
Entrez	66513 , 10454
Dilution Range	WB: 1:500-1000
Expiration Date	12 months from date of receipt.



Western blot analysis of TAB1 (Phospho-S438) antibody.



Direct ELISA antibody dose-response curve for Phospho-S438 and Non-phospho-S438.