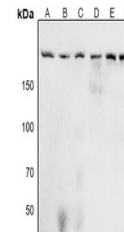


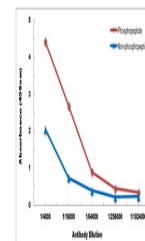
Product Datasheet

ACIN1 (phospho-S1180) antibody (orb515284)

Description	Rabbit polyclonal antibody to ACIN1 (phospho-S1180)
Species/Host	Rabbit
Reactivity	Human, Mouse, Rat
Conjugation	Unconjugated
Tested Applications	WB
Immunogen	KLH-conjugated synthetic phosphopeptide corresponding to residues surrounding S1180 of human Acinus protein. The exact sequence is proprietary.
Target	ACIN1
Preservatives	Liquid in 0.42% Potassium phosphate, 0.87% Sodium chloride, pH 7.3, 30% glycerol, and 0.01% sodium azide.
Form/Appearance	Liquid in 0.42% Potassium phosphate, 0.87% Sodium chloride, pH 7.3, 30% glycerol, and 0.01% sodium azide.
Storage	Maintain refrigerated at 2-8°C for up to 2 weeks. For long term storage store at -20°C in small aliquots to prevent freeze-thaw cycles.
Note	For research use only
Clonality	Polyclonal
Source	Rabbit
Uniprot ID	Q9JIX8 , O95104 , Q63627 , A2AJT4 , Q9UKV3 , Q8VH51 , Q14498 , Q8TF01
Entrez	170791 , 57466 , 25957 , 22985 , 56215 , 9584
Dilution Range	WB: 1:500-1000
Expiration Date	12 months from date of receipt.



Western blot analysis of Acinus (Phospho-S1180)



Direct ELISA antibody dose-response curve