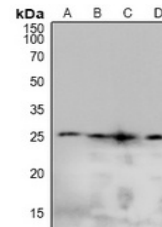


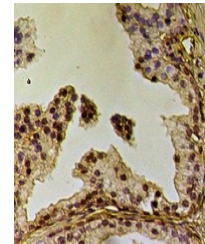
Product Datasheet

CAV2 (phospho-Y19) antibody (orb515277)

Description	Rabbit polyclonal antibody to CAV2 (phospho-Y19)
Species/Host	Rabbit
Reactivity	Human, Mouse, Rat
Conjugation	Unconjugated
Tested Applications	IH, WB
Immunogen	KLH-conjugated synthetic phosphopeptide corresponding to residues surrounding Y19 of human Caveolin 2 protein. The exact sequence is proprietary.
Target	CAV2
Preservatives	Liquid in 0.42% Potassium phosphate, 0.87% Sodium chloride, pH 7.3, 30% glycerol, and 0.01% sodium azide.
Form/Appearance	Liquid in 0.42% Potassium phosphate, 0.87% Sodium chloride, pH 7.3, 30% glycerol, and 0.01% sodium azide.
Storage	Maintain refrigerated at 2-8°C for up to 2 weeks. For long term storage store at -20°C in small aliquots to prevent freeze-thaw cycles.
Note	For research use only
Clonality	Polyclonal
Source	Rabbit
Uniprot ID	P51636 , Q9WVC3 , Q2IBC5
Entrez	363425 , 12390 , 858
Dilution Range	WB: 1:500-1000
Expiration Date	12 months from date of receipt.



Western blot analysis of Caveolin 2 (Pho...



Immunohistochemical analysis of Caveolin...