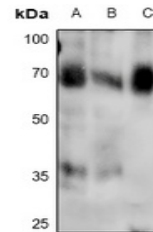


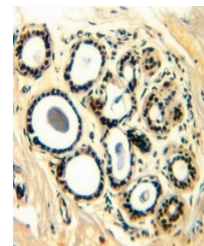
Product Datasheet

SMAD4 (phospho-T276) antibody (orb515275)

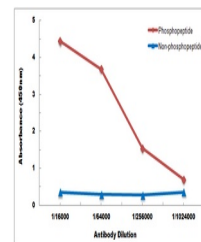
Description	Rabbit polyclonal antibody to SMAD4 (phospho-T276)
Species/Host	Rabbit
Reactivity	Human, Mouse, Rat
Conjugation	Unconjugated
Tested Applications	IH, WB
Immunogen	KLH-conjugated synthetic phosphopeptide corresponding to residues surrounding T276 of human SMAD4 protein. The exact sequence is proprietary.
Target	SMAD4
Preservatives	Liquid in 0.42% Potassium phosphate, 0.87% Sodium chloride, pH 7.3, 30% glycerol, and 0.01% sodium azide.
Form/Appearance	Liquid in 0.42% Potassium phosphate, 0.87% Sodium chloride, pH 7.3, 30% glycerol, and 0.01% sodium azide.
Storage	Maintain refrigerated at 2-8°C for up to 2 weeks. For long term storage store at -20°C in small aliquots to prevent freeze-thaw cycles.
Note	For research use only
Clonality	Polyclonal
Source	Rabbit
Uniprot ID	O70437 , Q13485 , P97471
Entrez	50554 , 4089 , 17128
Dilution Range	WB: 1:500-1000
Expiration Date	12 months from date of receipt.



Western blot analysis of SMAD4 (Phospho-T276)



Immunohistochemical analysis of SMAD4 (Phospho-T276)



Direct ELISA antibody dose-response curve