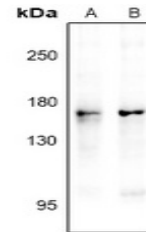


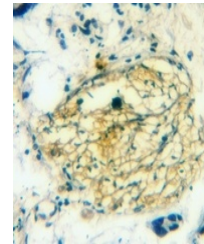
Product Datasheet

NOS1 (phospho-S1417) antibody (orb515268)

Description	Rabbit polyclonal antibody to NOS1 (phospho-S1417)
Species/Host	Rabbit
Reactivity	Human, Mouse, Rat
Conjugation	Unconjugated
Tested Applications	IH, WB
Immunogen	KLH-conjugated synthetic phosphopeptide corresponding to residues surrounding S1417 of human nNOS protein. The exact sequence is proprietary.
Target	NOS1
Preservatives	Liquid in 0.42% Potassium phosphate, 0.87% Sodium chloride, pH 7.3, 30% glycerol, and 0.01% sodium azide.
Form/Appearance	Liquid in 0.42% Potassium phosphate, 0.87% Sodium chloride, pH 7.3, 30% glycerol, and 0.01% sodium azide.
Storage	Maintain refrigerated at 2-8°C for up to 2 weeks. For long term storage store at -20°C in small aliquots to prevent freeze-thaw cycles.
Note	For research use only
Clonality	Polyclonal
Source	Rabbit
Uniprot ID	Q9Z0J4 , P29475 , P29476
Entrez	18125 , 24598 , 4842
Dilution Range	WB: 1:500-1000
Expiration Date	12 months from date of receipt.



Western blot analysis of nNOS (Phospho-S1417)



Immunohistochemical analysis of nNOS (Phospho-S1417)