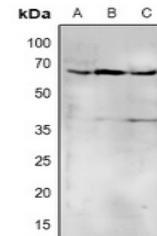


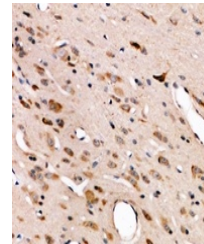
Product Datasheet

SIRPA antibody (orb515259)

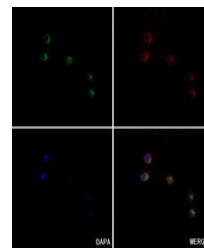
Description	Rabbit polyclonal antibody to SIRPA
Species/Host	Rabbit
Reactivity	Human
Conjugation	Unconjugated
Tested Applications	IF, IH, WB
Immunogen	KLH-conjugated synthetic peptide encompassing a sequence within the center region of human CD172a/b. The exact sequence is proprietary.
Target	SIRPA; SIRPB1
Preservatives	Liquid in 0.42% Potassium phosphate, 0.87% Sodium chloride, pH 7.3, 30% glycerol, and 0.01% sodium azide.
Form/Appearance	Liquid in 0.42% Potassium phosphate, 0.87% Sodium chloride, pH 7.3, 30% glycerol, and 0.01% sodium azide.
Storage	Shipped at 4°C. Upon delivery aliquot and store at -20°C for one year. Avoid freeze/thaw cycles.
Note	For research use only
Clonality	Polyclonal
Source	Rabbit
Uniprot ID	P78324 , Q5TFQ8
Entrez	140885 , 10326 , 100653194
Dilution Range	WB: 1:500-1000, IHC-P: 1:50-100
Expiration Date	12 months from date of receipt.



Western blot analysis of CD172a/b expres...



Immunohistochemical analysis of CD172a/b...



Immunofluorescent analysis of CD172a/b S...