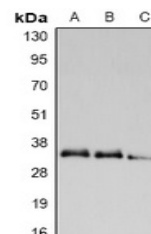


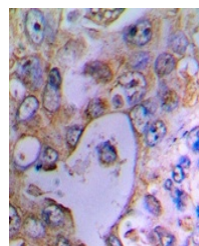
Product Datasheet

UCP2 antibody (orb515188)

Description	Rabbit polyclonal antibody to UCP2
Species/Host	Rabbit
Reactivity	Human, Mouse, Rat, Sheep
Conjugation	Unconjugated
Tested Applications	IH, WB
Immunogen	KLH-conjugated synthetic peptide encompassing a sequence within the center region of human UCP2. The exact sequence is proprietary.
Target	UCP2
Preservatives	Liquid in 0.42% Potassium phosphate, 0.87% Sodium chloride, pH 7.3, 30% glycerol, and 0.01% sodium azide.
Form/Appearance	Liquid in 0.42% Potassium phosphate, 0.87% Sodium chloride, pH 7.3, 30% glycerol, and 0.01% sodium azide.
Storage	Maintain refrigerated at 2-8°C for up to 2 weeks. For long term storage store at -20°C in small aliquots to prevent freeze-thaw cycles.
Note	For research use only
Clonality	Polyclonal
Source	Rabbit
Uniprot ID	P56500, P70406, P55851
Entrez	7351, 54315, 22228
Dilution Range	WB: 1:500-1000, IHC-P: 1:50-100
Expiration Date	12 months from date of receipt.



Western blot analysis of UCP2 expression...



Immunohistochemical analysis of UCP2 sta...