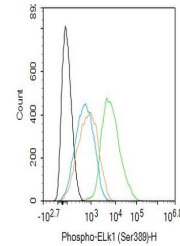


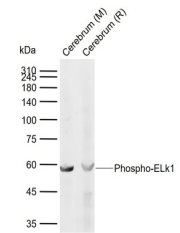
Product Datasheet

ELk1 (phospho-Ser389) antibody (orb5148)

Description	ELk1 (phospho-Ser389) antibody
Species/Host	Rabbit
Reactivity	Human, Mouse, Rat
Conjugation	Unconjugated
Tested Applications	FC, WB
Immunogen	KLH conjugated Synthesised phosphopeptide derived from human ELK1 around the phosphorylation site of Ser389 (PR(p-S)PA)
Target	Phospho-ELK1 (Ser389)
Preservatives	0.01M TBS(pH7.4) with 1% rAlbumin, 0.03% Proclin300 and 50% Glycerol.
Form/Appearance	Liquid
Concentration	1mg/ml
Storage	Maintain refrigerated at 2-8°C for up to 2 weeks. For long term storage store at -20°C in small aliquots to prevent freeze-thaw cycles.
Note	For research use only
Isotype	IgG
Clonality	Polyclonal
MW	47 kDa
Uniprot ID	P19419
Dilution Range	WB=1:500-2000, Flow-Cyt=1ug/Test, IHC-F=1:100-500, IF=1:100-500, ELISA=1:5000-10000
Expiration Date	12 months from date of receipt.



Flow cytometry of U-87MG(black line).Pri...



Western blot:Lane 1:Mouse Cerebrum;Lane ...