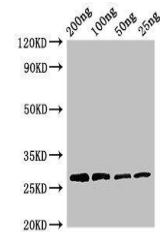


Product Datasheet

Papain antibody (orb51450)

Description	Papain antibody
Species/Host	Rabbit
Reactivity	Plant
Conjugation	Unconjugated
Tested Applications	ELISA, WB
Immunogen	Recombinant Carica papaya Papain protein (134-345AA)
Target	Papain
Preservatives	Preservative: 0.03% Proclin 300. Constituents: 50% Glycerol
Form/Appearance	Liquid
Storage	Maintain refrigerated at 2-8°C for up to 2 weeks. For long term storage store at -20°C in small aliquots to prevent freeze-thaw cycles.
Note	For research use only
Isotype	IgG
Clonality	Polyclonal
Uniprot ID	P00784
Dilution Range	WB:1:500-5000
Expiration Date	12 months from date of receipt.



Western blot analysis of Recombinant pro...