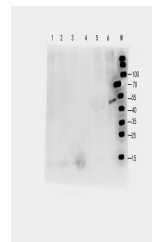


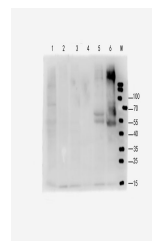
Product Datasheet

FOXC1 antibody (orb511148)

Description	FOXC1 antibody
Species/Host	Rabbit
Reactivity	Human
Conjugation	Unconjugated
Tested Applications	WB
Immunogen	KLH conjugated synthetic peptide derived from human FOXC1.Å
Target	FOXC1
Form/Appearance	10 mM PBS, 0.02% sodium azide
Concentration	- 100 µg (in 200 µl): 0.5 mg/ml- 200 µg (in 400 µl): 0.5 mg/ml
Storage	Store at 4°C for up to two weeks. For long term storage, aliquot and store at -20°C, avoid freeze/thaw cycles.
Note	For research use only
Isotype	IgG
Clonality	Polyclonal
Purity	Polyclonal antibodies are purified by peptide affinity chromatography
MW	57 kDa
Uniprot ID	Q61572
Dilution Range	IHC-P: 1:100-800
Expiration Date	12 months from date of receipt.



WB analysis of mouse brain, rat testis, ...



WB analysis of mouse brain, rat testis, ...