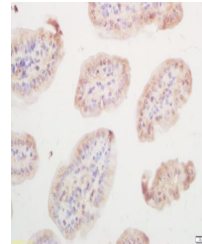


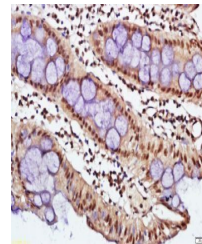
Product Datasheet

E2F1 (phospho-Ser332) antibody (orb5097)

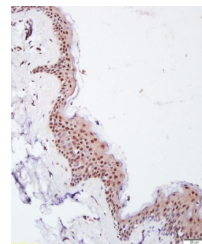
Description	E2F1 (phospho-Ser332) antibody
Species/Host	Rabbit
Reactivity	Human, Mouse, Rat
Conjugation	Unconjugated
Tested Applications	FC, IHC-P, WB
Immunogen	KLH conjugated Synthesised phosphopeptide derived from human E2F1 around the phosphorylation site of Ser332 (IV(p-S)PP)
Target	phospho-E2F1 (Ser332)
Preservatives	0.01M TBS(pH7.4) with 1% rAlbumin, 0.03% Proclin300 and 50% Glycerol.
Form/Appearance	Liquid
Concentration	1mg/ml
Storage	Shipped at 4°C. Store at -20 °C for one year. Avoid repeated freeze/thaw cycles.
Note	For research use only
Isotype	IgG
Clonality	Polyclonal
MW	46 kDa
Uniprot ID	Q01094
Dilution Range	WB=1:500-2000, IHC-P=1:100-500, Flow-Cyt=1ug/Test, IHC-F=1:100-500, IF=1:100-500, ELISA=1:5000-10000
Expiration Date	12 months from date of receipt.



Immunohistochemical staining of mouse in...



Immunohistochemical staining of human co...



Immunohistochemical staining of human sk...