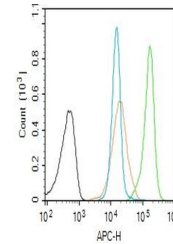


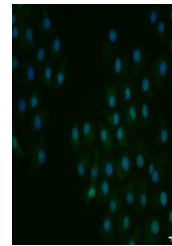
## Product Datasheet

### E2F1 (phospho-Ser364) antibody (orb5095)

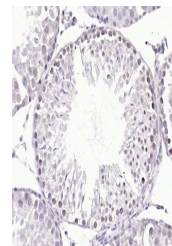
|                            |   |
|----------------------------|---|
| <b>Description</b>         | E2F1 (phospho-Ser364) antibody  |
| <b>Species/Host</b>        | Rabbit  |
| <b>Reactivity</b>          | Human   |
| <b>Conjugation</b>         | Unconjugated  |
| <b>Tested Applications</b> | FC, ICC, IHC-P, WB  |
| <b>Immunogen</b>           | KLH conjugated Synthesised phosphopeptide derived from human E2F1 around the phosphorylation site of Ser364 (MG(p-S)LR) |
| <b>Target</b>              | phospho-E2F1 (Ser364)   |
| <b>Preservatives</b>       | 0.01M TBS(pH7.4) with 1% rAlbumin, 0.03% Proclin300 and 50% Glycerol.   |
| <b>Form/Appearance</b>     | Liquid  |
| <b>Concentration</b>       | 1mg/ml  |
| <b>Storage</b>             | Shipped at 4°C. Store at -20°C for one year. Avoid repeated freeze/thaw cycles.   |
| <b>Note</b>                | For research use only   |
| <b>Isotype</b>             | IgG   |
| <b>Clonality</b>           | Polyclonal  |
| <b>MW</b>                  | 48 kDa  |
| <b>Uniprot ID</b>          | <b>Q01094</b>   |
| <b>Dilution Range</b>      | WB=1:500-2000, IHC-P=1:100-500, ICC=1:100, Flow-Cyt=1ug/Test, IHC-F=1:100-500, IF=1:100-500, ELISA=1:5000-10000         |
| <b>Expiration Date</b>     | 12 months from date of receipt.   |



Flow cytometry of Molt4 (Black). Primary ...



ICC analysis of HepG2 cell using phospho...



IHC-P analysis of rat testis using phospho...