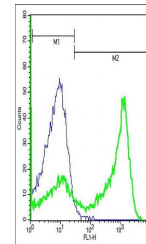


Product Datasheet

DOK1 (phospho-Tyr362) antibody (orb5083)

Description	DOK1 (phospho-Tyr362) antibody
Species/Host	Rabbit
Reactivity	Human
Conjugation	Unconjugated
Tested Applications	WB
Immunogen	KLH conjugated Synthesised phosphopeptide derived from human DOK1 around the phosphorylation site of Tyr362 (PI(p-Y)DE)
Target	phospho-DOK1 (Tyr362)
Preservatives	0.01M TBS(pH7.4) with 1% rAlbumin, 0.03% Proclin300 and 50% Glycerol.
Form/Appearance	Liquid
Concentration	1mg/ml
Storage	Shipped at 4°C. Store at -20 °C for one year. Avoid repeated freeze/thaw cycles.
Note	For research use only
Isotype	IgG
Clonality	Polyclonal
MW	62 kDa
Uniprot ID	Q99704
Dilution Range	WB=1:500-2000
Expiration Date	12 months from date of receipt.



Flow cytometric analysis of (mo) Splenoc...