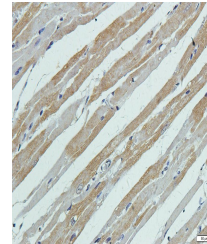


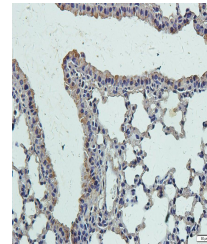
Product Datasheet

Slc28a3 antibody (orb507591)

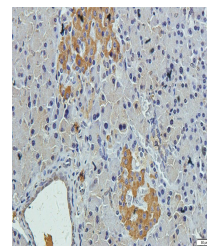
Description	Slc28a3 antibody
Species/Host	Rabbit
Reactivity	Mouse, Rat
Conjugation	Unconjugated
Tested Applications	ICC, IF, IHC-P, WB
Immunogen	KLH conjugated synthetic peptide derived from human Slc28a3. Please contact us for the exact immunogen sequence."
Target	Slc28a3
Form/Appearance	10 mM PBS, 0.02% sodium azide
Concentration	- 100 µg (in 200 µl): 0.5 mg/ml- 200 µg (in 400 µl): 0.5 mg/ml
Storage	Store at 4°C for up to two weeks. For long term storage, aliquot and store at -20°C, avoid freeze/thaw cycles.
Note	For research use only
Isotype	IgG
Clonality	Polyclonal
Purity	Polyclonal antibodies are purified by peptide affinity chromatography
MW	77 kDa
Uniprot ID	Q9HAS3
Dilution Range	IHC-P: 1:100-600, IF/ICC: 1:100-600
Expiration Date	12 months from date of receipt.



IHC-P staining of rat heart tissue using...



Immunohistochemical staining of mouse lu...



Immunohistochemical staining of rat panc...