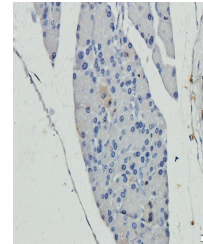


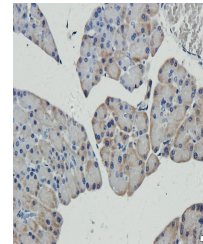
Product Datasheet

AMBP antibody (orb507578)

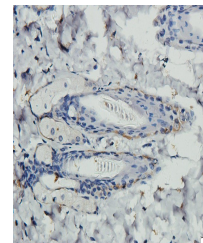
Description	AMBP antibody
Species/Host	Rabbit
Reactivity	Mouse, Rat
Conjugation	Unconjugated
Tested Applications	IHC-P, WB
Immunogen	KLH conjugated synthetic peptide derived from human AMBP. Please contact us for the exact immunogen sequence."
Target	AMBP
Form/Appearance	10 mM PBS, 0.02% sodium azide
Concentration	- 100 µg (in 200 µl): 0.5 mg/ml- 200 µg (in 400 µl): 0.5 mg/ml
Storage	Store at 4°C for up to two weeks. For long term storage, aliquot and store at -20°C, avoid freeze/thaw cycles.
Note	For research use only
Isotype	IgG
Clonality	Polyclonal
Purity	Polyclonal antibodies are purified by peptide affinity chromatography
MW	39 kDa
Uniprot ID	P02760
Dilution Range	IHC-P: 1: 100-500
Expiration Date	12 months from date of receipt.



Immunohistochemical staining of rat panc...



IHC-P staining of rat pancreas tissue us...



Immunohistochemical staining of paraffin...