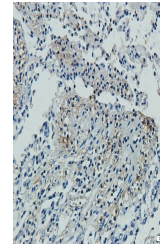


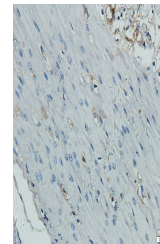
Product Datasheet

PD2R2 antibody (orb507577)

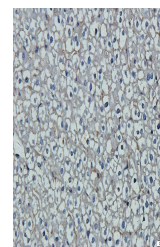
Description	PD2R2 antibody
Species/Host	Rabbit
Reactivity	Guinea pig, Mouse, Porcine, Rat
Conjugation	Unconjugated
Tested Applications	IHC-P, WB
Immunogen	KLH conjugated synthetic peptide derived from human PD2R2. Please contact us for the exact immunogen sequence."
Target	PD2R2
Form/Appearance	10 mM PBS, 0.02% sodium azide
Concentration	- 100 µg (in 200 µl): 0.5 mg/ml- 200 µg (in 400 µl): 0.5 mg/ml
Storage	Store at 4°C for up to two weeks. For long term storage, aliquot and store at -20°C, avoid freeze/thaw cycles.
Note	For research use only
Isotype	IgG
Clonality	Polyclonal
Purity	Polyclonal antibodies are purified by peptide affinity chromatography
MW	43 kDa
Uniprot ID	Q9Y5Y4
Dilution Range	WB: 1:200-1000, IHC-P: 1: 100-600
Expiration Date	12 months from date of receipt.



IHC-P image of pig small intestine tissu...



IHC-P image of pig small intestine tissu...



IHC-P image of mouse liver tissue using ...