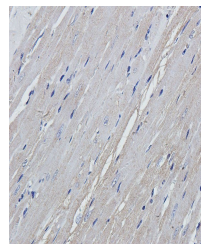


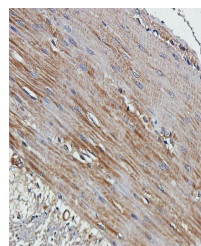
Product Datasheet

HYAS2 antibody (orb507566)

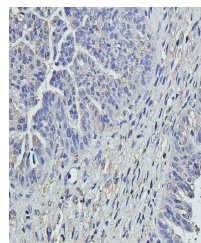
| | |
|----------------------------|---|
| Description | HYAS2 antibody |
| Species/Host | Rabbit |
| Reactivity | Human, Mouse, Porcine, Rat |
| Conjugation | Unconjugated |
| Tested Applications | IHC-P, WB |
| Immunogen | KLH conjugated synthetic peptide derived from human HYAS2. Please contact us for the exact immunogen sequence." |
| Target | HYAS2 |
| Form/Appearance | 10 mM PBS, 0.02% sodium azide |
| Concentration | - 100 µg (in 200 µl): 0.5 mg/ml- 200 µg (in 400 µl): 0.5 mg/ml |
| Storage | Store at 4°C for up to two weeks. For long term storage, aliquot and store at -20°C, avoid freeze/thaw cycles. |
| Note | For research use only |
| Isotype | IgG |
| Clonality | Polyclonal |
| Purity | Polyclonal antibodies are purified by peptide affinity chromatography |
| MW | 63 kDa |
| Uniprot ID | Q92819 |
| Dilution Range | WB: 1:200-1000, IHC-P: 1: 100-500 |
| Expiration Date | 12 months from date of receipt. |



Immunohistochemical staining of paraffin...



Immunohistochemical staining of paraffin...



IHC-P staining of human ovarian cancer t...