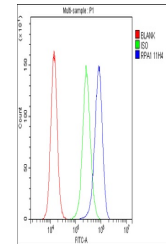


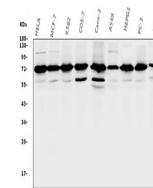
Product Datasheet

RPA70 RPA1 Antibody (monoclonal, 11H4) (orb507562)

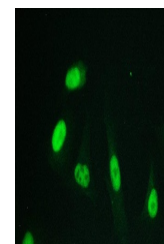
| | |
|----------------------------|---|
| Description | RPA70 RPA1 Antibody (monoclonal, 11H4) |
| Species/Host | Mouse |
| Reactivity | Human, Monkey, Mouse |
| Conjugation | Unconjugated |
| Tested Applications | FC, IF, IHC, WB |
| Immunogen | A synthetic peptide corresponding to a sequence at the C-terminus of human RPA70 (533-568aa QESAEAILGQNAAYLGELKDKNEQAFEEVFQANFR), different from the related mouse sequence by three amino acids. |
| Form/Appearance | Lyophilized |
| Concentration | Adding 0.2 ml of distilled water will yield a concentration of 500 µg/ml. |
| Storage | Store at -20°C for one year from date of receipt. After reconstitution, at 4°C for one month. It can also be aliquotted and stored frozen at -20°C for six months. Avoid repeated freeze-thaw cycles. |
| Note | For research use only |
| Application notes | Western blot, 0.1-0.5µg/ml Immunohistochemistry (Paraffin-embedded Section), 0.5-1µg/ml Immunofluorescence, 2µg/ml Flow Cytometry, 1-3µg/1x10 ⁶ cells |
| Isotype | Mouse IgG2b |
| Clonality | Monoclonal |
| MW | 12 kDa |
| Uniprot ID | P27694 |
| Expiration Date | 12 months from date of receipt. |



Flow Cytometry analysis of A431 cells us...



WB analysis of RPA70 using anti-RPA70 an...



IF analysis of RPA70 using anti-RPA70 an...